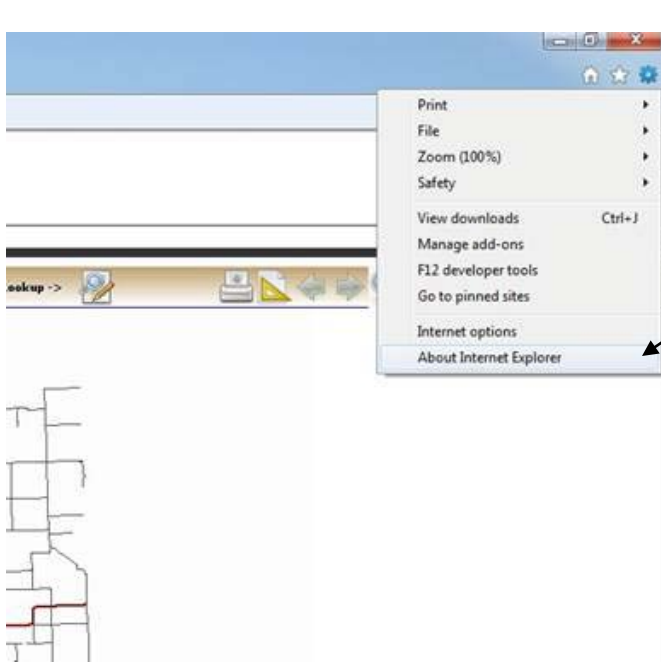


## How-to configure Microsoft Internet Explorer 10 to be compatible with the Jefferson Co. Kansas Interactive Map

You can check the currently installed version of Internet Explorer by going to the upper right of the browser and clicking on the 'star' (tools) to display a dropdown, then choose 'About Internet Explorer'.

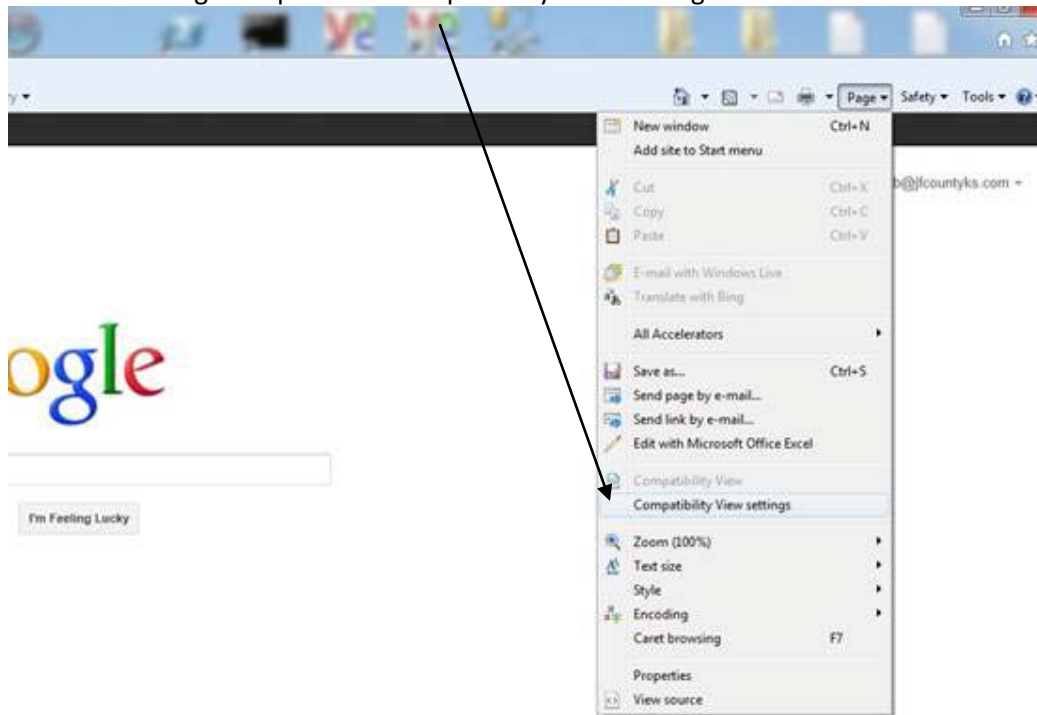


If a window displays indicating that you have Internet Explorer 10 then perform the following compatibility procedure if you choose to.

1. Right click the top of the browser and make sure 'Command Bar' has a checkmark beside it.

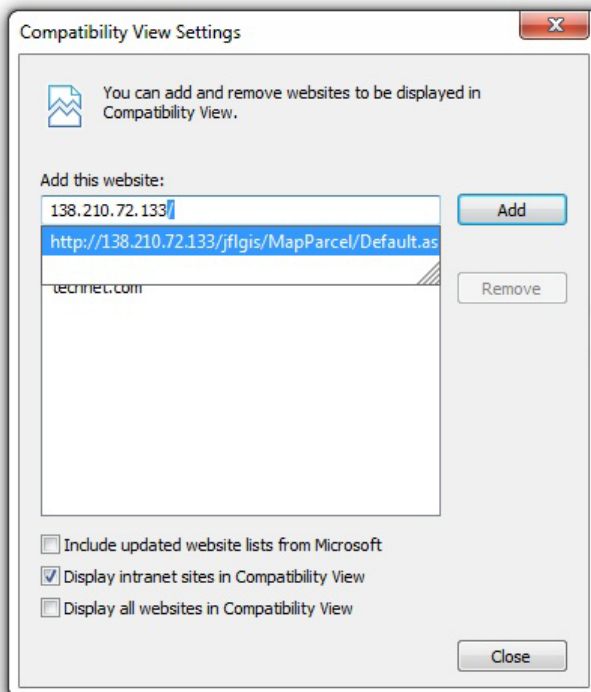


2. Go to the 'Page' dropdown-->Compatibility View settings.



A 'Compatibility View Settings' window will appear.

3. Type in 138.210.72.133 in the 'Add this website' textbox and click the 'Add button'.



You should now be able to view the interactive map site in Internet Explorer 10.

For further question or help please call:  
Kirk Webb, GIS Specialist  
Jefferson County Kansas  
785-863-2173